



Connect SRU to Datalogger

The SRU cable connects to a Levellogger's Direct Read Cable, LevelVent Wellhead or AquaVent Wellhead Connector Cable.

An L5 Threaded or Slip Fit Adaptor can also be used to connect the SRU cable to a Levellogger.

SRU On/Off and Navigation

Press and hold any button to turn the SRU on. The SRU has an auto-off after 2 minutes of inactivity.

-  Use the up/down arrows to scroll through menu items.
-  Use the left/right arrows to select the menu actions shown at the bottom left/right of the LCD (e.g. Next, Back, etc.)

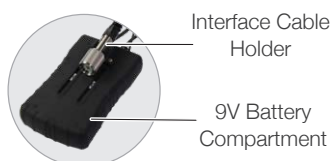
SRU Menu Options

There are three main menu items for the SRU:

Take a Reading: allows you to display an instant reading from the connected datalogger, turn on/off barometric compensation, and start and save a real-time logging session.

Download/View Files: allows you to download and save the data from the connected datalogger's current internal logging session, and view all data files saved in the SRU.

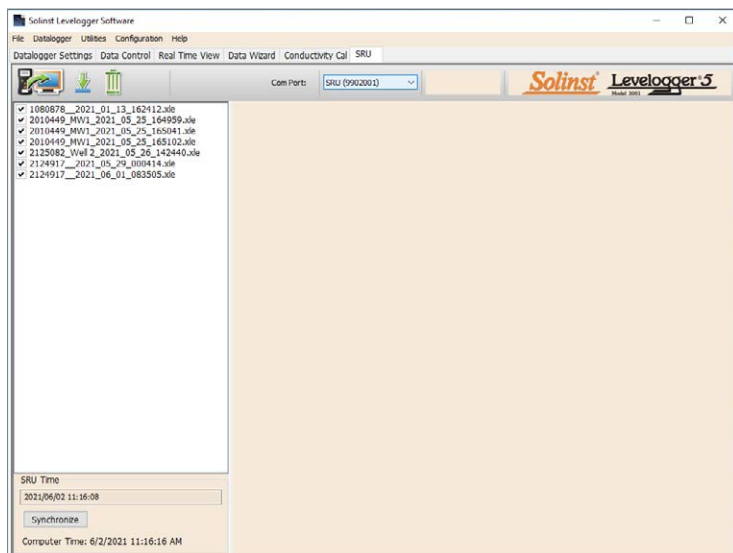
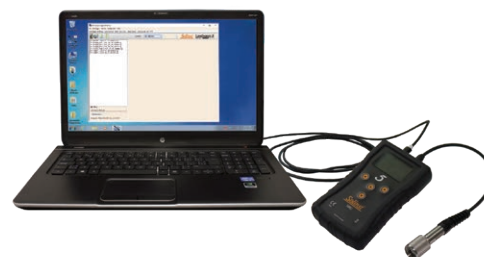
Status/Setup: allows you to view information about the SRU and connected datalogger, including battery level, memory, serial number, logging status and firmware version. You can also adjust the contrast of the LCD screen.



Transferring Data to a PC

Download the latest version of Levellogger Software from: <https://www.solinst.com/downloads/>

Connect the SRU to the PC using a USB Cable. The SRU will automatically turn on and the LCD screen will show a message indicating the SRU is connected to the PC.



1. Start the Levellogger Software and open the SRU tab.
2. Select the appropriate Com Port for the connected SRU from the centre drop-down menu.
3. Click the 'Retrieve SRU Settings' icon. A window will open prompting you to select the location to save the data files.
4. Select the file(s) from the list that you want to download and click the 'Download Data' icon.
5. Data files can be viewed in the Data Control tab by selecting "Finish and Open all", or select "Finish" if you do not need to view the data right away – data can be viewed later by going to the Data Control tab and selecting the 'Open Files' icon.
6. All data files saved in the SRU can be erased by clicking the 'Erase Files' icon.

